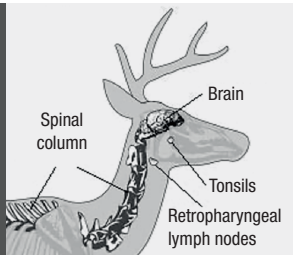


Restrictions on the transportation of some anatomical parts



When a white-tailed deer, moose or farmed cervid is killed within a 45 km radius from where the CWD was detected, some parts of its carcass must not leave the area delineated by this radius. Those parts must also stay within the hunting zone

in which the animal was killed. Thus, even if it is possible to register this game online, the butchering must be done within the 45 km radius and the hunting zone in which the animal was killed. Keep your registration confirmation; it allows the butcher to know where your game was harvested.

Parts with transportation restrictions

- All parts of the spine
- Head, specifically all parts of the brain, eyes, retropharyngeal lymph nodes and tonsils.
- Internal organs (spleen, liver, heart, kidneys, mammary glands, bladder, etc.)
- Testicles

Parts that may be transported without restriction

- Meat, provided that it does not contain any anatomical parts subject to transportation restrictions
- Skin and leather tanned or with the fat removed
- Antlers without velvet
- Disinfected skull caps without attached skin, meat or tissue
- Teeth without attached meat or tissue
- Any part mounted by a taxidermist

Chronic wasting disease of cervids

CWD is lethal for cervids. No treatment or vaccine is currently available to fight this disease.

When present in wild cervid populations, CWD is impossible to eliminate.

There is currently no scientific evidence to suggest that CWD can be transmitted to humans. However, Health Canada recommends not to use or consume any tissue coming from an infected animal. Only the analysis of the animals' brain and lymph nodes can confirm the diagnosis. Always follow the best practices for handling and preserving game meat.

No CWD cases have been detected in any of the wild cervids analyzed.

If you see a wild cervid with an unusual appearance or behaviour, please contact SOS Poaching at 1-800-463-2191.

General information

**Respecting the law is your responsibility!
Keep yourself informed!**

- Read the regulations carefully and follow them.
- Get permission from the owner to hunt on their private land.
- Report any illegal act by contacting SOS Poaching (1-800-463-2191 or centralesos@mffp.gouv.qc.ca).

For more information, call **1-877-346-6763**
or visit **Quebec.ca/cervidsdisease**.



Chronic wasting disease of cervids

Information for hunters

SEASON 2020

Following the discovery of chronic wasting disease of cervids (CWD) in Québec on a Laurentides farm in 2018, the Ministère des Forêts, de la Faune et des Parcs continues to intervene to minimize the risk of establishment of the disease in wildlife.

Specific hunting measures for the 2020 season

Antlerless deer hunting licences have been issued for the 2020 hunting season in the enhanced surveillance area (ESA) to maintain a low deer density and obtain sufficient samples for surveillance.

Sampling and surveillance

In 2020, all hunters who harvest a white-tailed deer or a moose over 12 months old in the 45 km movement restriction area **must imperatively have it tested for CWD through one of the following methods:**

1. **By going to one of these registration stations during white-tailed deer hunting seasons:**

Dépanneur Telmosse
1404, route 117
Mont-Tremblant

Sport N.P. enr.
14-1, rang Sainte-Julie Est
Saint-André-Avellin

Coopérative de solidarité
Laurel-Station
3455, route Principale
Wentworth-Nord

Halte routière Pétroles Bélisle
125, route du Canton
Brownsburg-Chatham

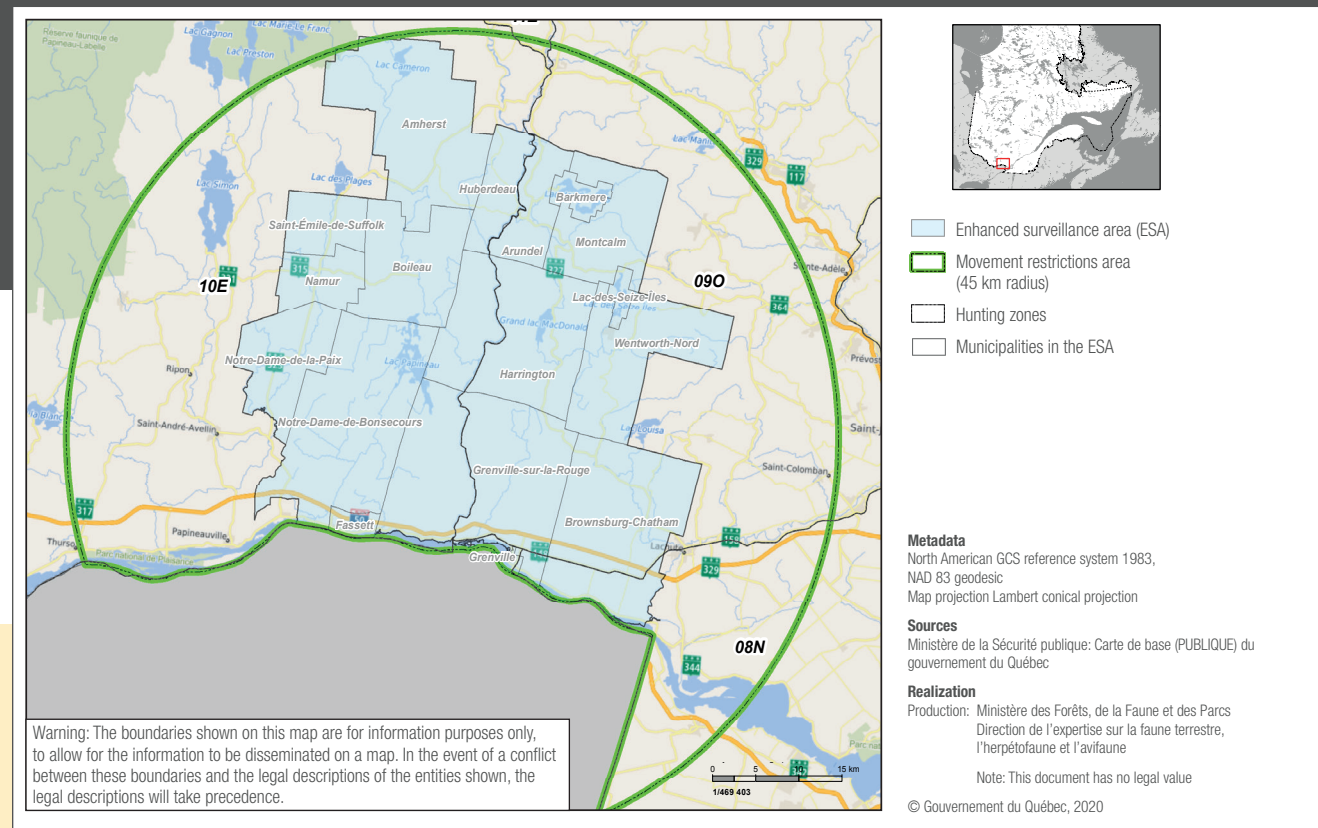
Department staff will be on location to collect the samples on the base of the animal's head. Sampling will be done in compliance with the public health directives related to COVID-19.

2. **By having your game cut at a participating butcher shop**

Many butcher shops take part in collecting samples to detect CWD. Samples are collected on the animal's head. You must therefore leave the head at the butcher shop and the transportation coupon attached to it. The list of participating butcher shops is available online.

3. **By leaving your game's head (you may keep the antlers) at one of the drop points provided for this purpose**

The transportation coupon must be left attached to the animal's head. The location of drop points is available online.



Where can I see the results?

The analysis results, as well as the information on how to have your game tested, will be available online.

Keep your registration number and your hunting licence number—you may need them to look at the results. If your game tests positive, the Ministère des Forêts, de la Faune et des Parcs will contact you.

More details on
Québec.ca/cervidsdisease.